
**EELY© ET Controller Device Driver for
Windows CE©**

User's Manual

Version 1.0

**Software Installation
Operational Feature Specification**

By EELY©

Document Security Class: D



1	Installation Specification.....	3
1.1	System Requirements.....	3
1.2	Software Installation	3
1.3	Driver Running	3
2	Operational Feature Specification	4
2.1	Port Panel.....	4
2.1.1	Language.....	4
2.1.2	Controller Port.....	4
2.1.3	Digital Filters	4
2.1.4	Apply Button.....	5
2.2	Calibration Panel	5
2.2.1	Operate Region.....	5
2.2.2	Calibration tool	6
2.2.3	Linearization.....	6
2.2.4	Reset Calibration Data	6
2.3	Settings Panel	7
2.3.1	Mouse Mode.....	7
2.3.2	Beep mode	7
2.3.3	Double Click	8
2.4	Utility Panel.....	8
2.4.1	Right Button tool.....	8
2.4.2	Test Tools	9
2.5	About Panel.....	10

1 Installation Specification

1.1 System Requirements

Applied Products: Now, the device drive only can be installed on the Windows CE products of Embedded-Tech Co., Ltd.

Processor: X86 CPU with Floating Point Processor.

Operating System: Windows CE.

1.2 Software Installation

First step, extract DriverCE.zip to DriverCE directory (the name of directory is the one you desired).

Second step, copy the DriverCE directory to a destination memory directory of your Windows CE system, such as \Harddisk\DriverCE, \CF\DriverCE, etc.

Last, choose AutoRun panel by opening Embedded-Tech Tools in Control Panel, then add LoadCenterCE.exe in \Harddisk\DriverCE to Device Start AutoRun and save your settings, so the driver will autorun on Windows CE start.

1.3 Driver Running

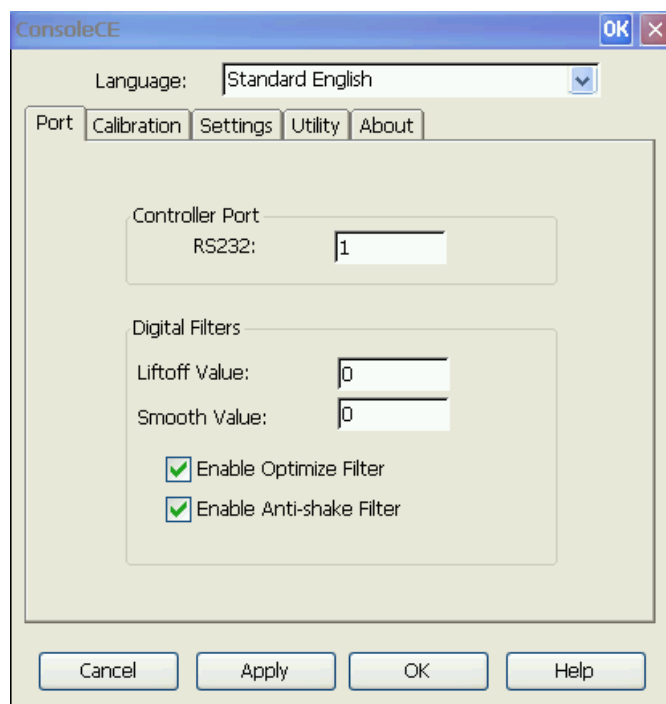
To run the device driver, you can open ConsoleCE.exe in \Harddisk\DriverCE\.

All settings and tools of the driver are controlled by the executable file.

Note: Do not run directly other .exe files in the directory.

2 Operational Feature Specification

2.1 Port Panel



2.1.1 Language

ET-DRV-WCE supports three languages: Standard English, Simplified Chinese and Traditional Chinese.

2.1.2 Controller Port

Now the driver only supports RS232 controller and the number is the COM port number that the controller currently use, its range is 1~64. For USB type controller, its driver is under developing.

2.1.3 Digital Filters

Liftoff Value: The bigger value is set, the slower response to pointing appears. The input value range is between 0~99, its unit is ms.

Smooth Value: The bigger value is set, smoother line is to score. The input value range is between 0~99, its unit is pixel.

Optimize Filter: Enabling the optimize filter can help reduce the CPU memory requirements and may be necessary for computers with limited memory.

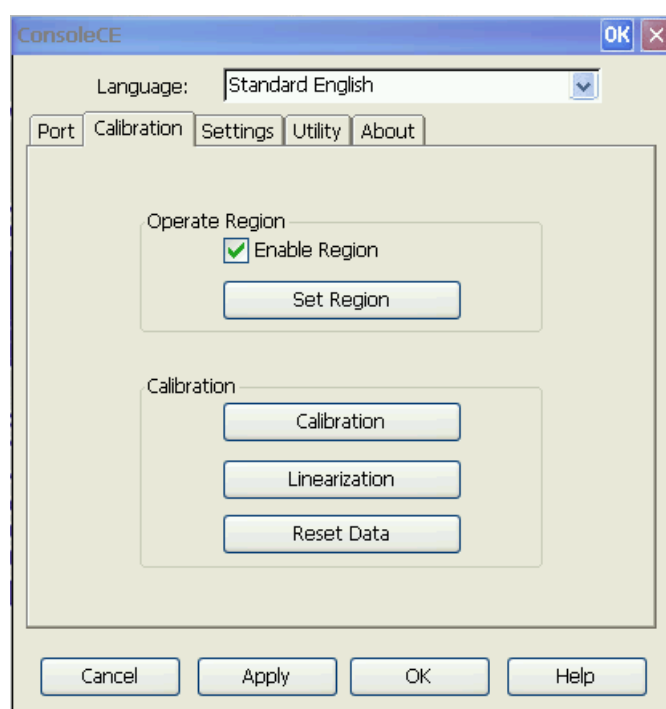
Anti-shake Filter: The function of the filter is to reduce shake when you line on touch panel, so the line appears smoother.

Note: Using the filters will consume some CPU memory.

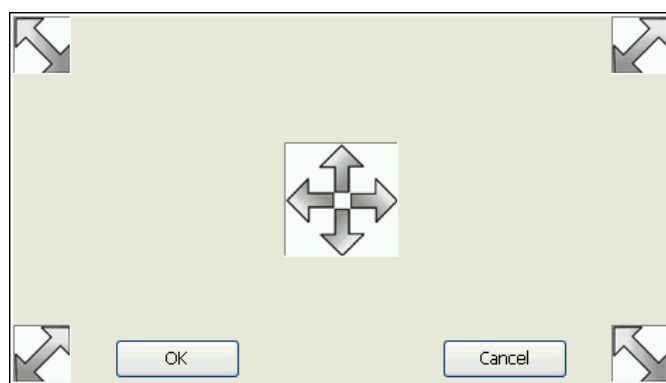
2.1.4 Apply Button

You must click Apply button to make your change settings effective.

2.2 Calibration Panel



2.2.1 Operate Region

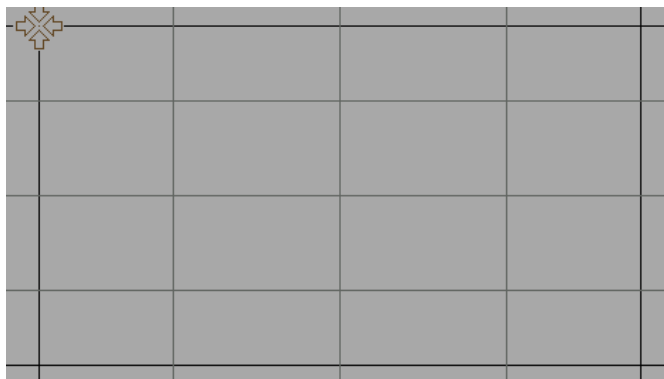


The desktop is the default operating region usually, but the device driver allow user customizing the operating region according to requirements. First step is to click Set Region button, it will result in the above window, and then you can drag this window to

any your desired position on desktop by pressing the four-head arrow area in the center of the window. To adjust the size of operating region, you can drag the four corners. Click OK button and Apply button after you satisfied with the position and size. You can point accurately in your defined region after calibration.

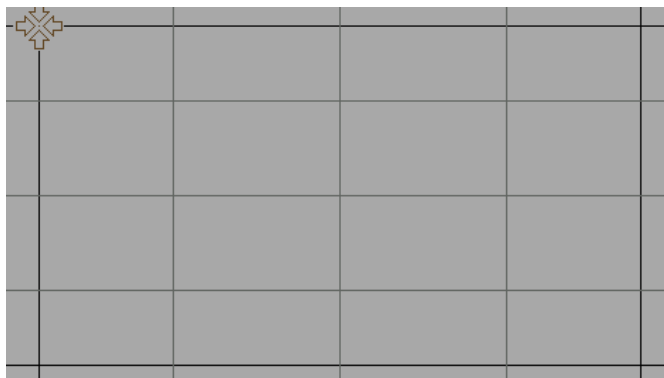
To restore operating region to desktop, all you need to do is to uncheck Enable Region and click Apply button.

2.2.2 Calibration tool



Do 4-Point calibration when you click the button. Please remember your finger must press stably in the center the four arrows until you heard the hint sound.

2.2.3 Linearization

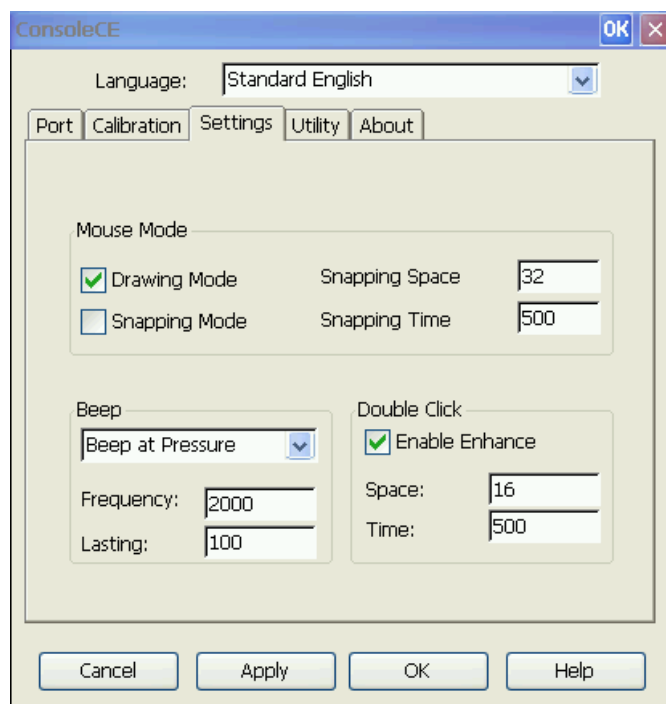


Usually, using calibration tool is enough to general requirement. Linearization, equivalent to 25-Point calibration, is used if you need more accuracy.

2.2.4 Reset Calibration Data

Click the button if you want to reset calibration data.

2.3 Settings Panel



2.3.1 Mouse Mode

The device supplies two mouse modes: Drawing Mode and Snapping Mode.

Drawing Mode: Pressing the touch screen is equivalent to clicking the mouse button. Scoring on the Touch Screen is equivalent to moving the mouse with the button depressed. Releasing pressure from the Touch Screen is equivalent to releasing the mouse button.

Snapping Mode: Pressing the touch screen is equivalent to clicking the mouse button. The cursor will snap on the pressure point if your movements have not exceeded the settings of snapping space and snapping time, otherwise scoring on the touch screen is equivalent to moving the mouse with the button depressed. Releasing pressure from the touch screen is equivalent to releasing the mouse button. The input value range of snapping space is 0~100 and its unit is pixel. The range of snapping time is 0~2000 and its unit is ms.

2.3.2 Beep mode

No Beep: No Sound will be made during operation.

Beep at Pressure: A sound will be made when the touch screen is pressed.

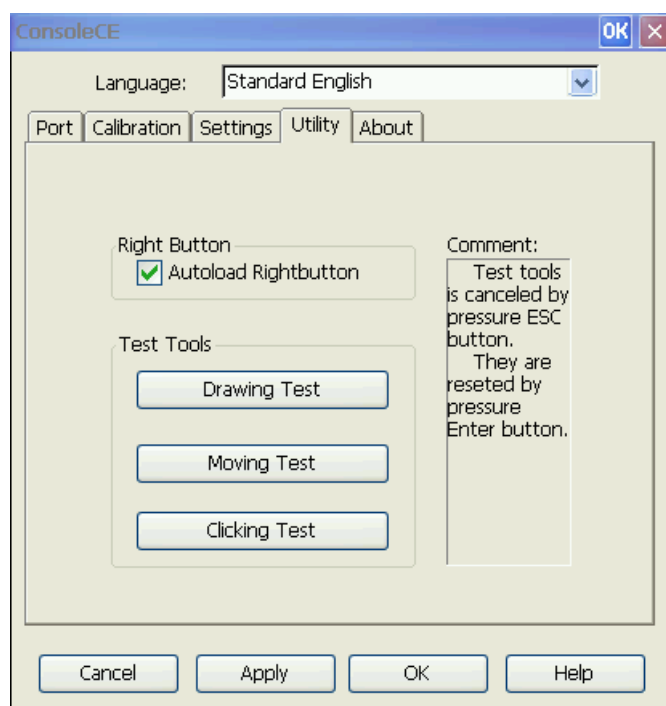
Beep at Release: A sound will be made when the touch screen is released.

You can adjust the frequency and the lasting time of sound by input appropriate value into Frequency and Lasting. The valid value of Frequency is between 100Hz and 10000Hz, the range of Lasting is 10ms~2000ms.

2.3.3 Double Click

There are differences in clicking time and clicking position between two clicks. When Enable Enhance check box is chosen and the differences in time and position within the range of your settings, the driver treats the two clicks as one double-click, otherwise they are two clicks. The range of Space and Time is as same as the ones of Snapping Space and Snapping Time.

2.4 Utility Panel

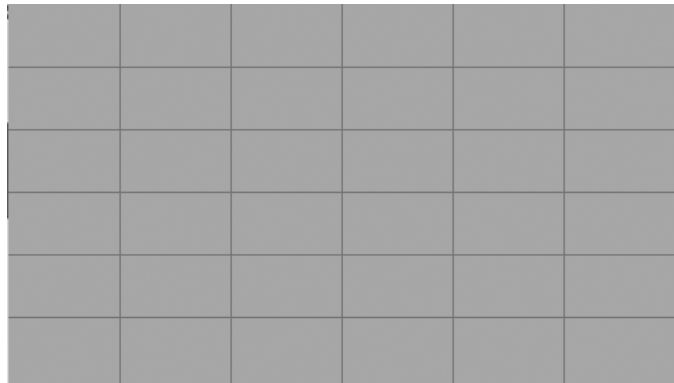


2.4.1 Right Button tool

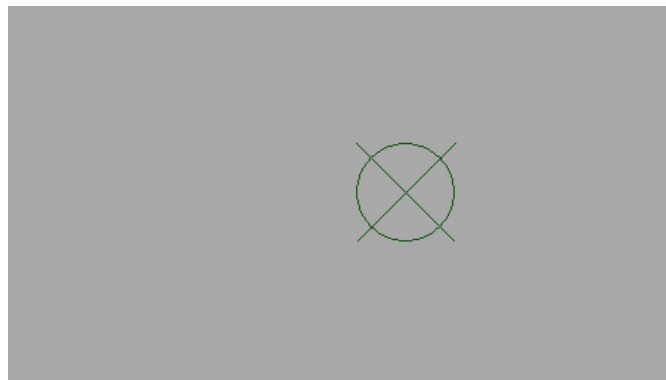


Right Button is a small top window that enables easy use of the right mouse button and it automatically appears after logging on if you chosen the check box, otherwise it is invisible.

2.4.2 Test Tools



Drawing Test: Drawing Test is used to test linearity.



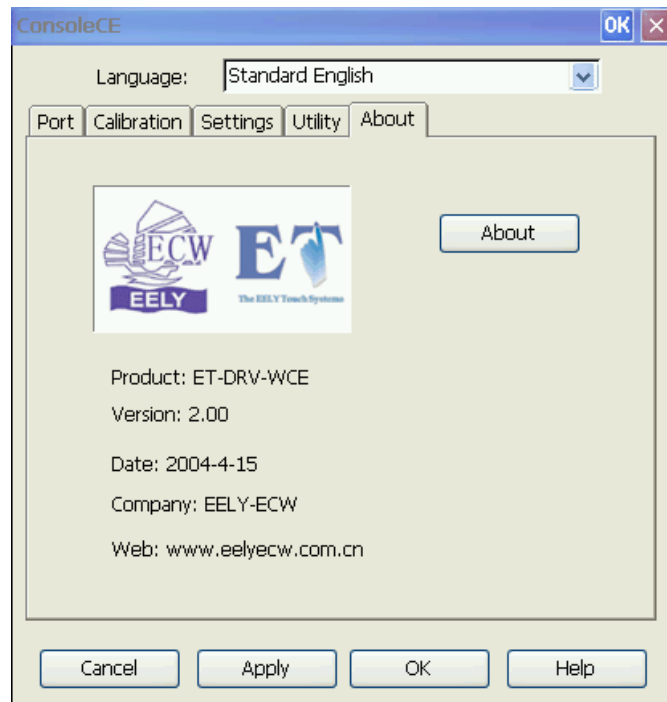
Moving Test: It is used to test response of moving.



Clicking Test: It is used to test response of clicking.

There is a comment on the right of the window to hint you can cancel the tools by pressure ESC key on keyboard and can reset by pressure Enter key.

2.5 About Panel



This panel includes some information about the device drive and EELY Corporation.

