
ET Resistance Controller

Chip Selection Guide

Beta Edition Version 0.6 By EELY

Security Class C All Rights Reserved

1 Selection Guide

1.1 Controller

Controller	Specification	Note
ET-R4-RS232	4 wire resistance touch screen controller with RS232 digital interface.	
ET-R4-USB	4 wire resistance touch screen controller with USB digital interface.	
ET-R5-RS232	5 wire resistance touch screen controller with RS232 digital interface.	
ET-R5-USB	5 wire resistance touch screen controller with USB digital interface.	
ET-R8-RS232	8 wire resistance touch screen controller with RS232 digital interface.	
ET-R8-USB	8 wire resistance touch screen controller with USB digital interface.	

1.2 Driver

Driver	Controller	Supported Operation System
ET-CD-V2.03	ET-R4-RS232, ET-R4-USB, ET-R5-RS232, ET-R5-USB, ET-R8-RS232, ET-R8-USB.	Windows 95, Windows 98, Windows ME, Windows NT, Windows 2K, Windows XP

2 Schematics

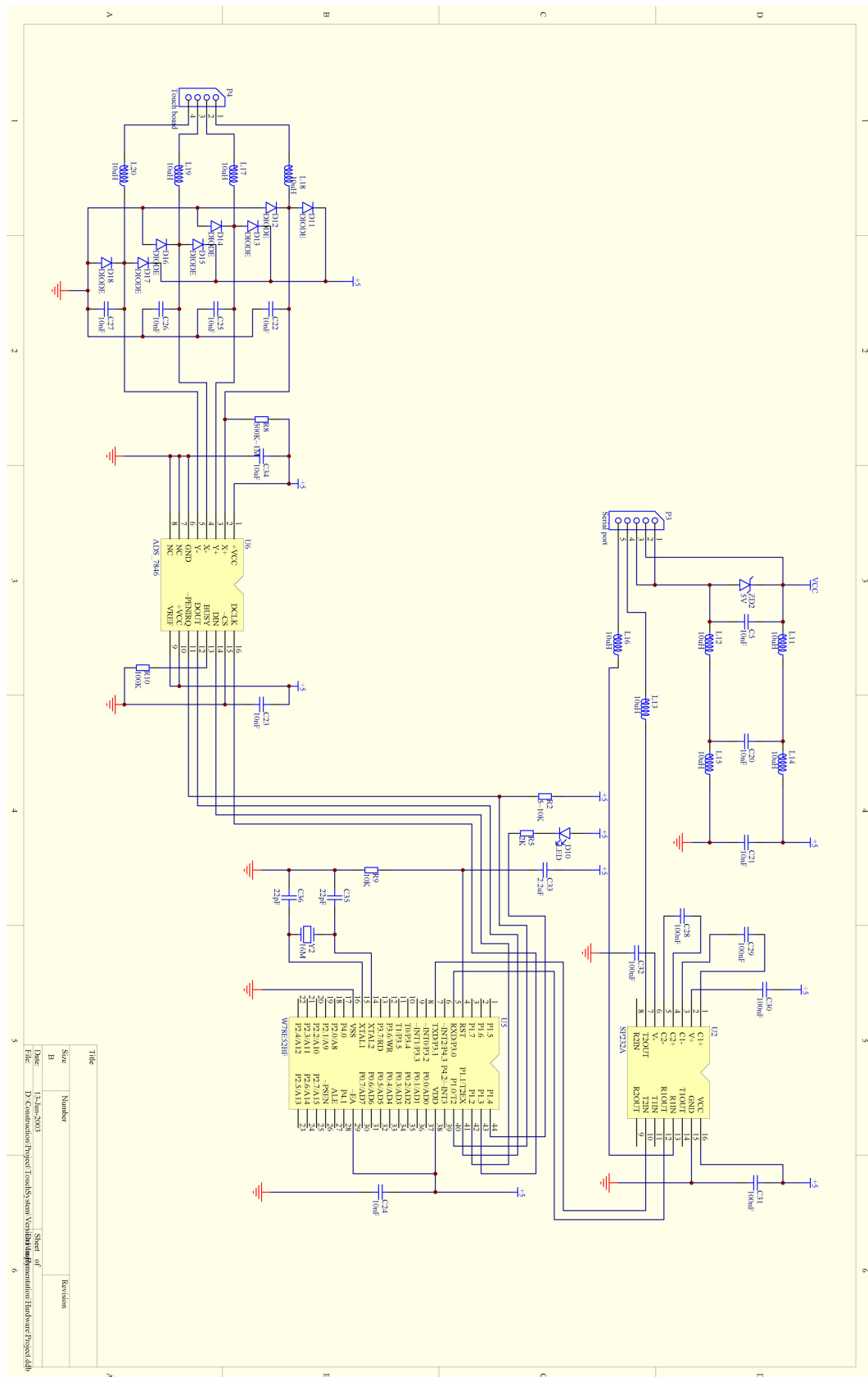
For embedded system or on-board-solutions we support the schematics of these controllers.

We provide the programmed micro unit processor for these controllers.

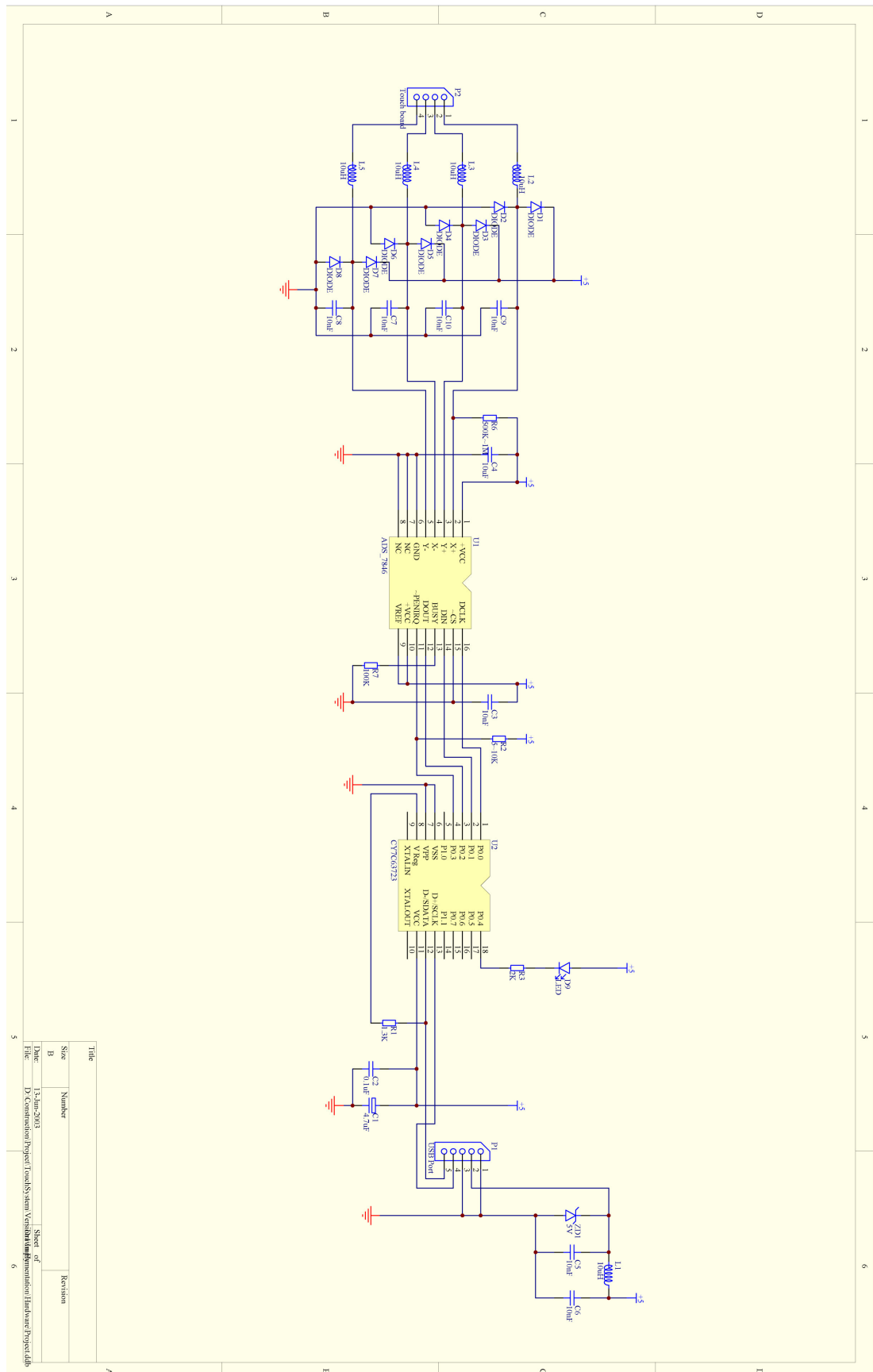
2.1 Main Chip Selection Guide

Controller	Main Chip Number	Note
ET-R4-RS232-V1	ET-R4RV1	Programmed W78E52
ET-R4-USB-V1	ET-R4UV1	Programmed CY7C63723
ET-R5-RS232-V1	ET-R5RV1	Programmed W78E52
ET-R5-USB-V1	ET-R5UV1	Programmed CY7C63723
ET-R8-RS232-V1	ET-R8RV1	Programmed W78E52
ET-R8-USB-V1	ET-R8UV1	Programmed CY7C63723

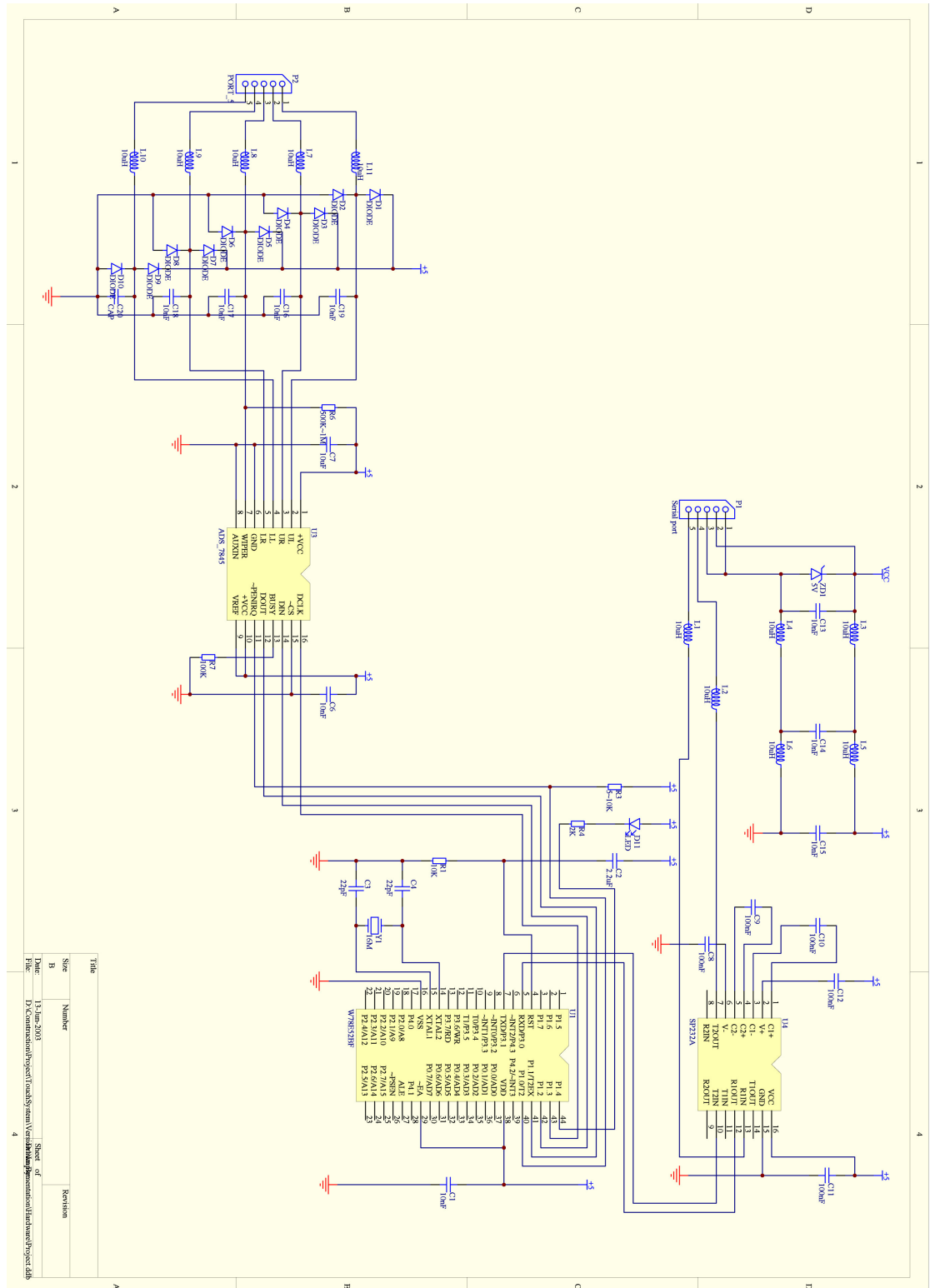
2.2 ET-R4-RS232-V1



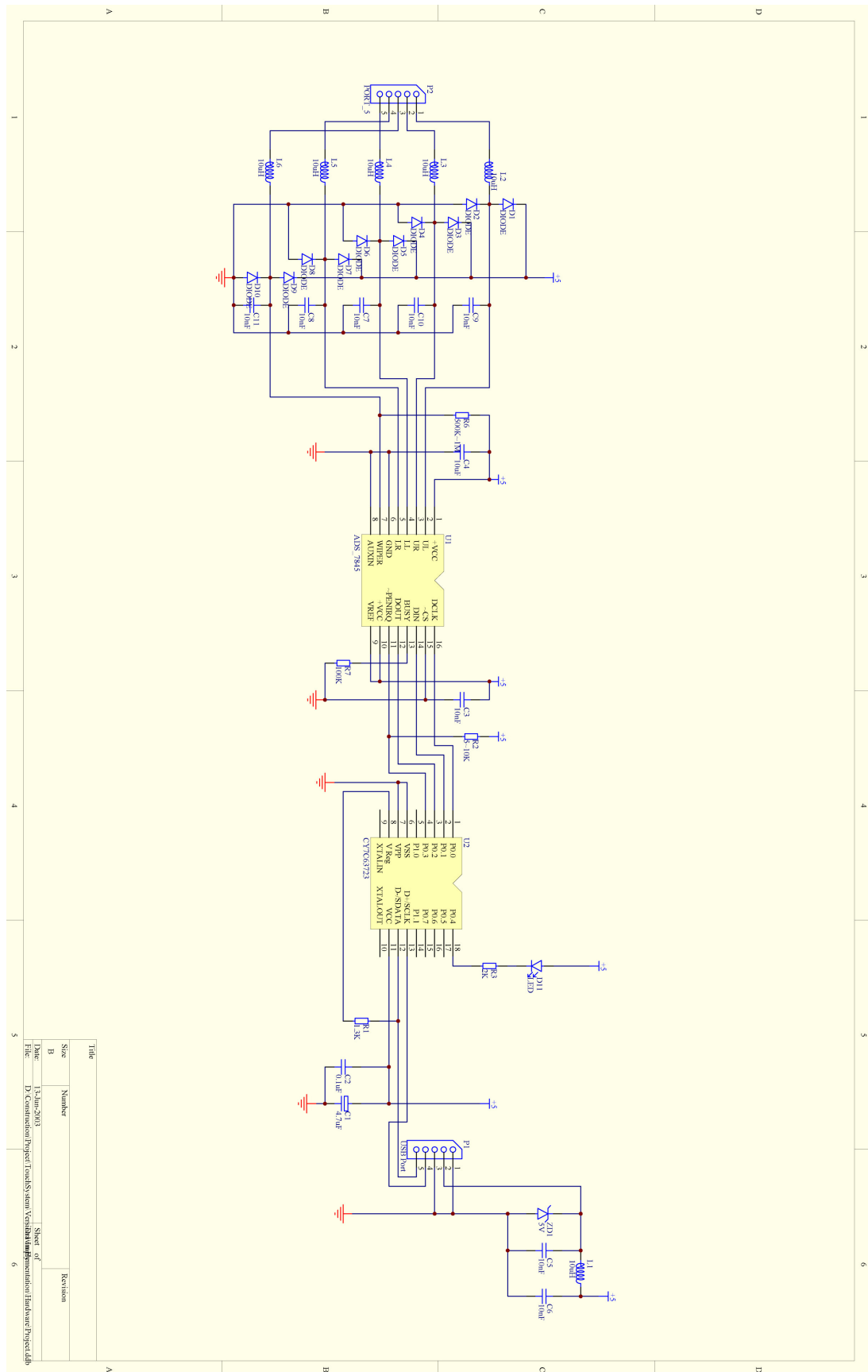
2.3 ET-R4-USB-V1



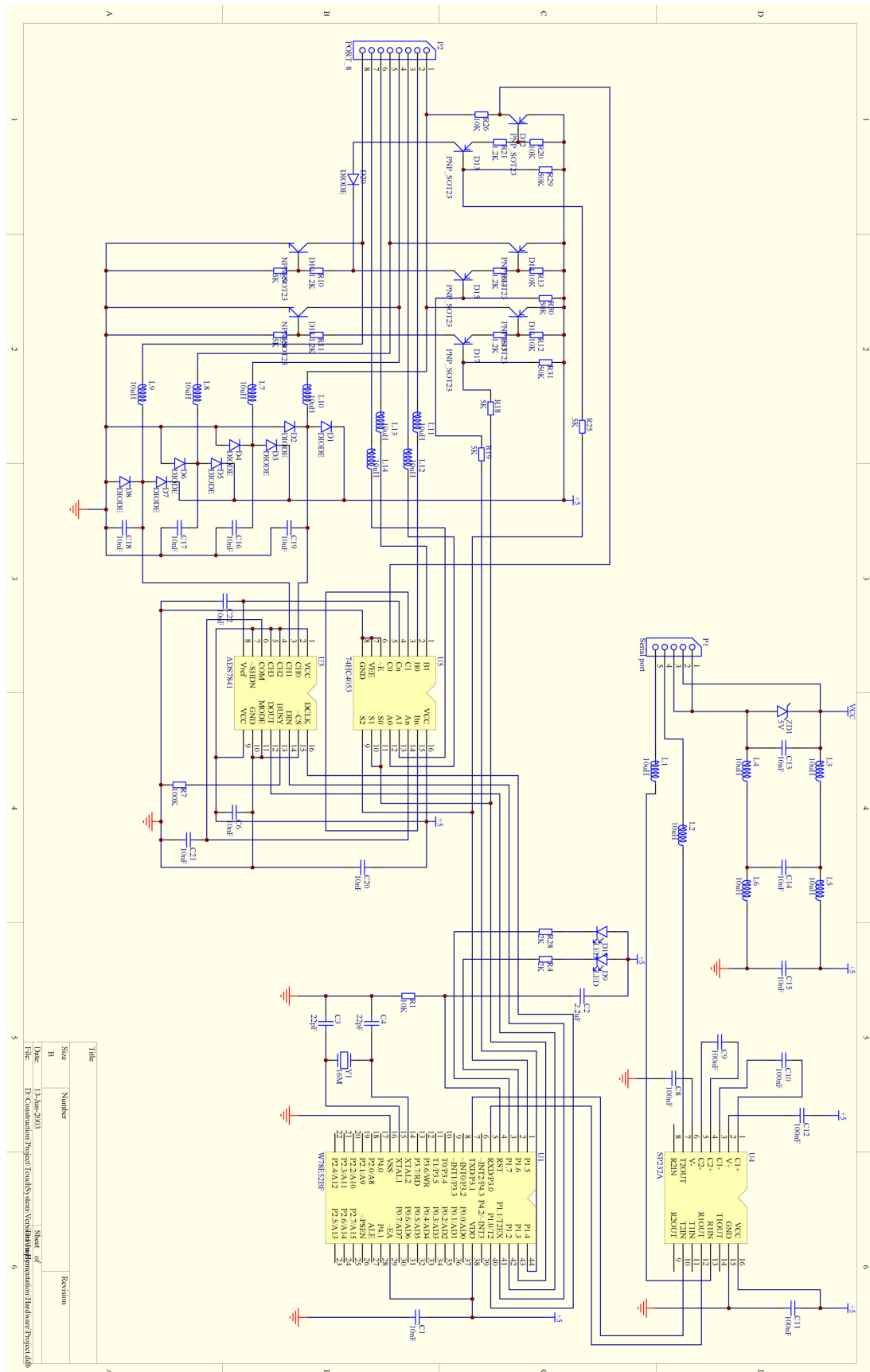
2.4 ET-R5-RS232-V1



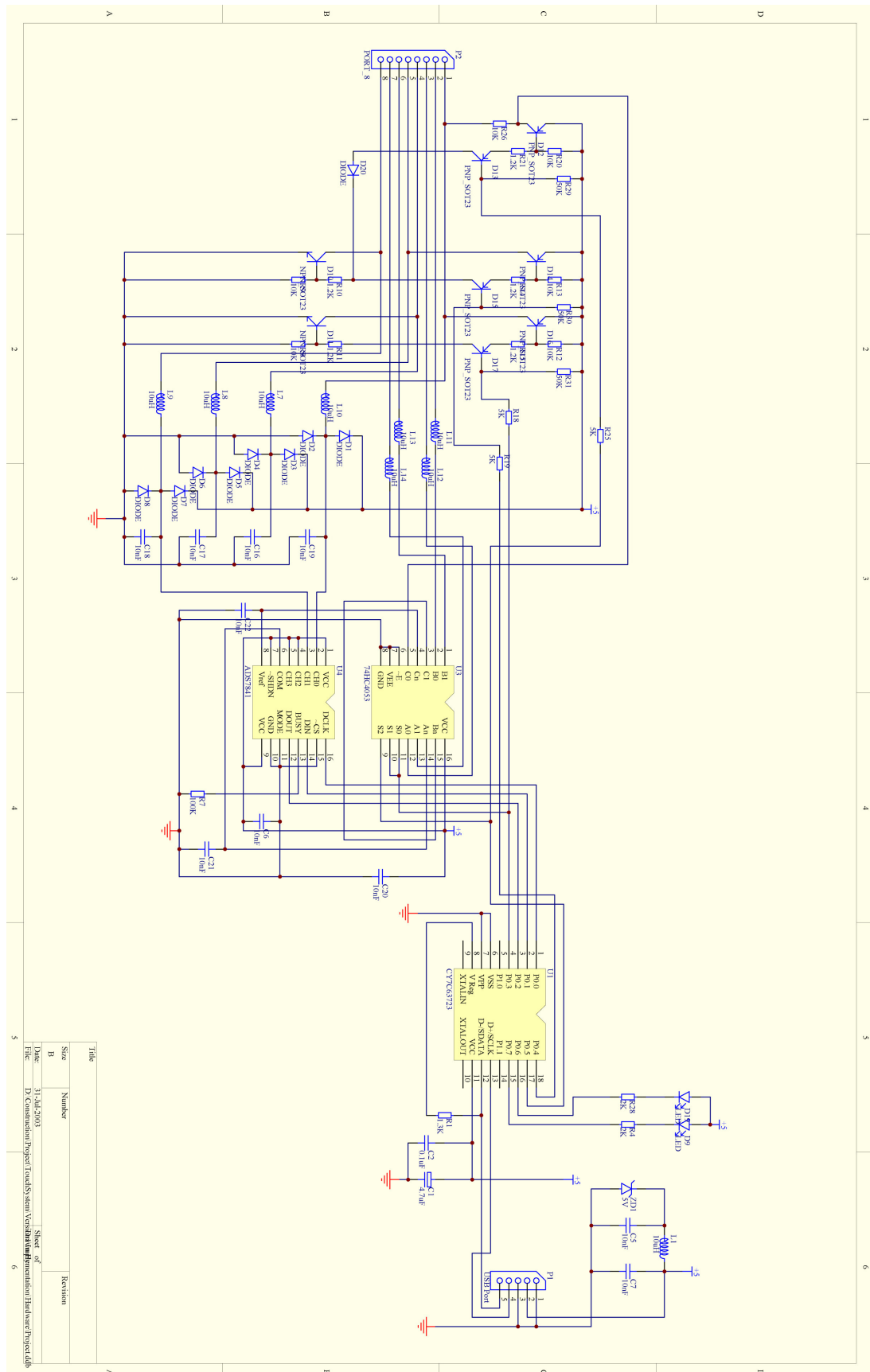
2.5 ET-R5-USB-V1



2.6 ET-R8-RS232-V1



2.7 ET-R8-USB-V1



3 Note